

## WOMEN'S MEASURING GUIDE

**BUST** .....

MEASURE UNDER YOUR ARMS,  
AROUND THE FULLEST PART  
OF YOUR CHEST

..... **WAIST**

MEASURE AROUND YOUR NATURAL  
WAISTLINE AT BELLY BUTTON LEVEL

..... **HIP**

MEASURE AROUND THE FULLEST  
PART OF YOUR BODY AT THE TOP  
OF YOUR LEG

**INSEAM** .....

WEARING PANTS THAT FIT WELL,  
REMOVE YOUR SHOES AND  
MEASURE FROM THE CROTCH  
SEAM TO THE FLOOR



## PRODUCT TECHNOLOGY



DRY  
WICKING



ANTI  
MICROBIAL



4-WAY  
STRETCH

## WOMEN'S SIZE CHART

MEASUREMENT AREA	XXS*	XS	S	M	L	XL
BUST		32"-34"	34"-36"	36"-38"	38"-40"	40"-42"
UNDER BUST		28"-29"	30"-31"	32"-33"	34"-35"	36"-38"
NATURAL WAIST AT BELLY BUTTON	23.5"-24.5"	25"-26.5"	27"-28.5"	29"-30.5"	31"-33"	34"-36"
HIP	33"-34"	34.5"-36"	36.5"-38"	38.5"-40"	40.5"-42"	42"-44"
INSEAM	31.5"	31.5"	32	32.5"	32.5"	32.5"

\*PERFORMANCE BOTTOMS ONLY

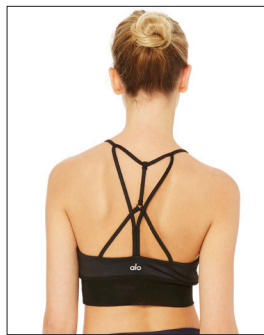
## BRA FIT GUIDE

HIGH SUPPORT



MEDIUM COVERAGE

MEDIUM SUPPORT



MEDIUM COVERAGE

LIGHT SUPPORT



LOW COVERAGE

	28	30	32	34	36	38
A	XS		XS/S	S/M	M	L
B					M/L	L/XL
C	S		S/M	M/L	L	XL
D						

## PRODUCT TECHNOLOGY



DRY  
WICKING



ANTI  
MICROBIAL



4-WAY  
STRETCH

## MEN'S SIZE CHART

MEASUREMENT AREA	S	M	L	XL	2XL
CHEST	34"-37"	38"-41"	42"-45"	46"-49"	50"-53"
WAIST	28"-30"	32"-34"	36"-38"	40"-42"	44"-46"
INSEAM	31"-32"	32"-33"	32.5"-33.5"	33.5"-34.5"	34.5"-35.5"